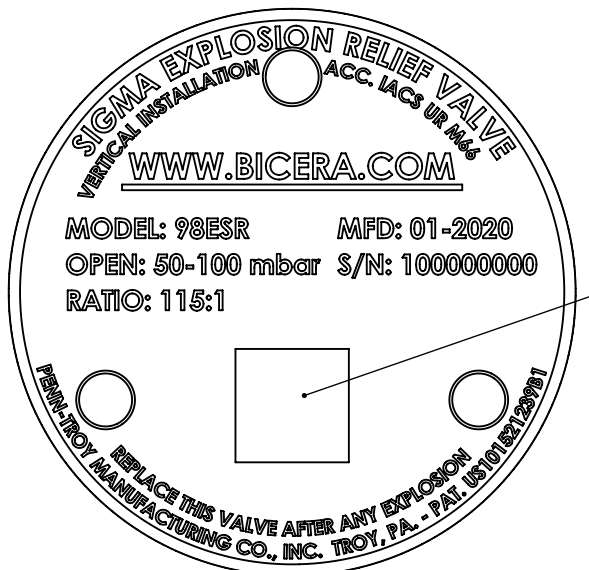
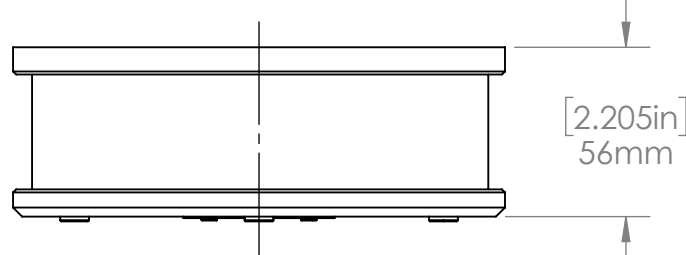


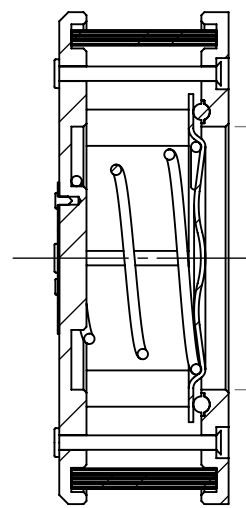
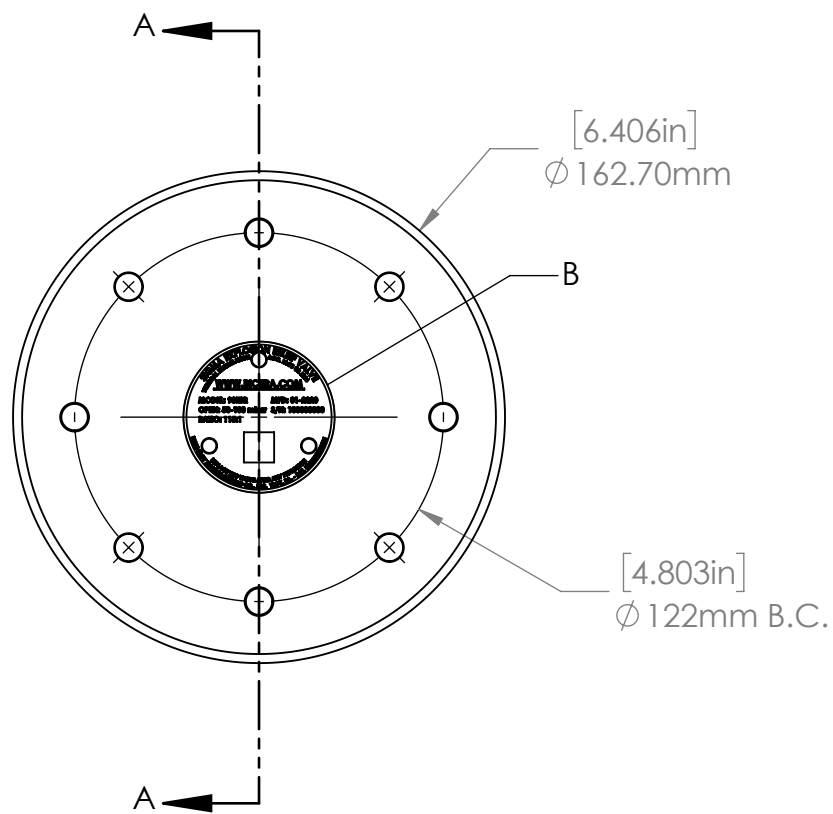
A



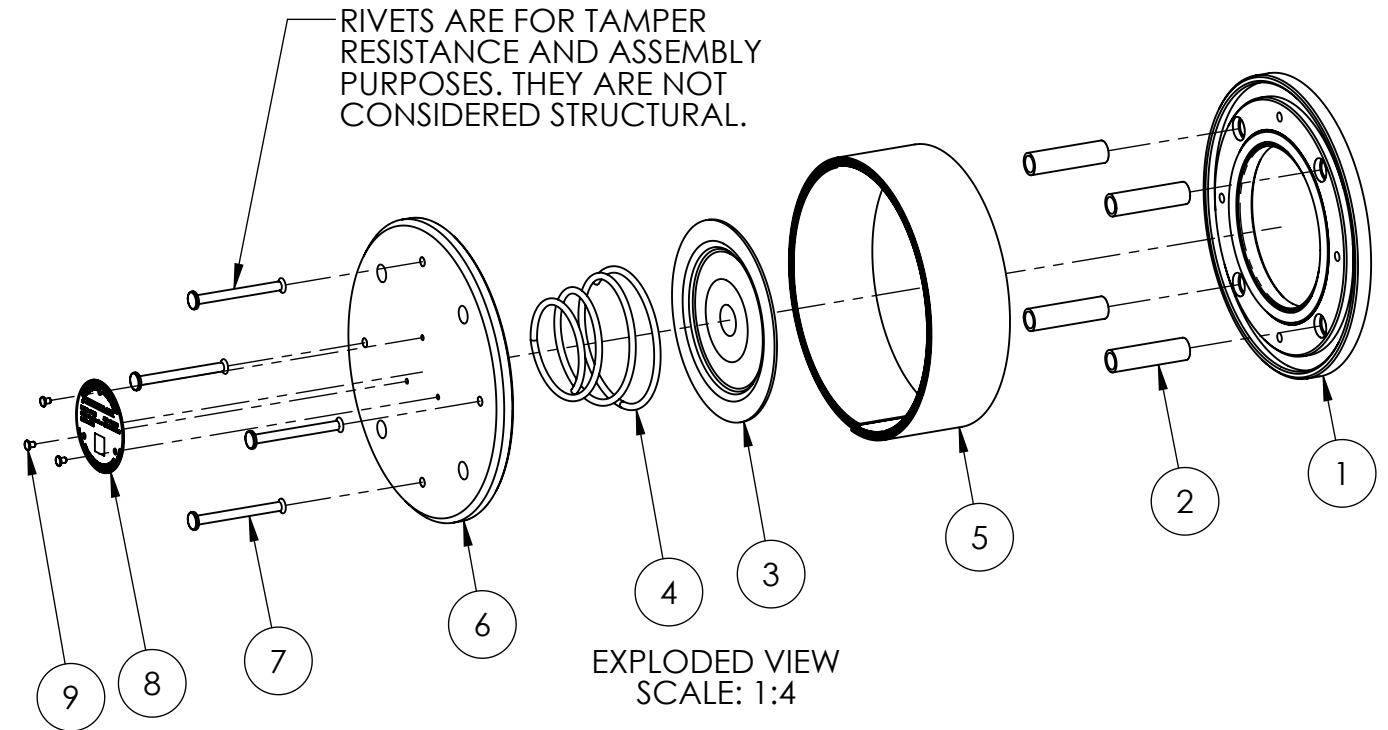
DETAIL B
SCALE 1.5 : 1

BOM TABLE					
ITEM NO.	PART NO.	DESCRIPTION	QTY.	MAT'L.	DWG. NO.
1	M98ESR-10	Carrier	1	Stl	BV-001248-SIG
2	P98ESR-20	Spacer Tube	4	SS	BV-000940-SIG
3	M98ESR-30	Valve Plate	1	Stl	BV-000868-SIG
4	P98ESR-40	Spring	1	SS	BV-000976-SIG
5	P98ESR-50	Flame Arrester	1	SS	BV-001224-SIG
6	P98ESR-60	Cap	1	Stl	BV-000866-SIG
7	P98ESR-70	Assy. Rivet	4	SS	BV-000935-SIG
8	P74-514/BA	Service Tag	1	Alum	BV-000991-SIG
9	UDRIVESCREW	Drive Tack	3	Stl/Zn	PT-001772-GEN

B



SECTION A-A



EXPLODED VIEW
SCALE: 1:4

- NOTES:
- RECOMMENDED MOUNTING HARDWARE:
 - 4 X M8 SCREWS (5/16")
 - TORQUE TO 13.56 N-M (10FT-LBS.) MAX
 - OPENING PRESSURE 0.05 - 0.10 BAR (0.73 - 1.45 PSI)
 - PROTECTS 0.517 M³ (18.26 FT³) OF CRANKCASE VOLUME
 - TESTED FOR VERTICAL INSTALLATION

DRAWN BY	MKK	MATERIAL	Steel/Alum.
DRAWN DATE	Feb 14, 2020	WEIGHT	
ENG. APPR.	MKK	CRITICAL TO QUALITY DIMENSIONS ARE MARKED THUS: (XX)	
MFG. APPR.	MJP	UNLESS OTHERWISE SPECIFIED:	
PROD. APPR.	WJJ	UNITS AS SHOWN	
Q.C. APPR.	CAC	ALL DIMENSIONS ARE REFERENCE ONLY	
PURCH. APPR.	DJP	DO NOT SCALE DRAWING	

TITLE:		
Sigma Valve SIGMA 98 ESR Assy.		
DWG. NO.		
BV-000867-SIG		
SIZE	PART NO.	REV
B	98ESR	A-02
SCALE:	2:5	SHEET 1 OF 1

REVISIONS	
ZONE	DESCRIPTION
A	New production print



D